



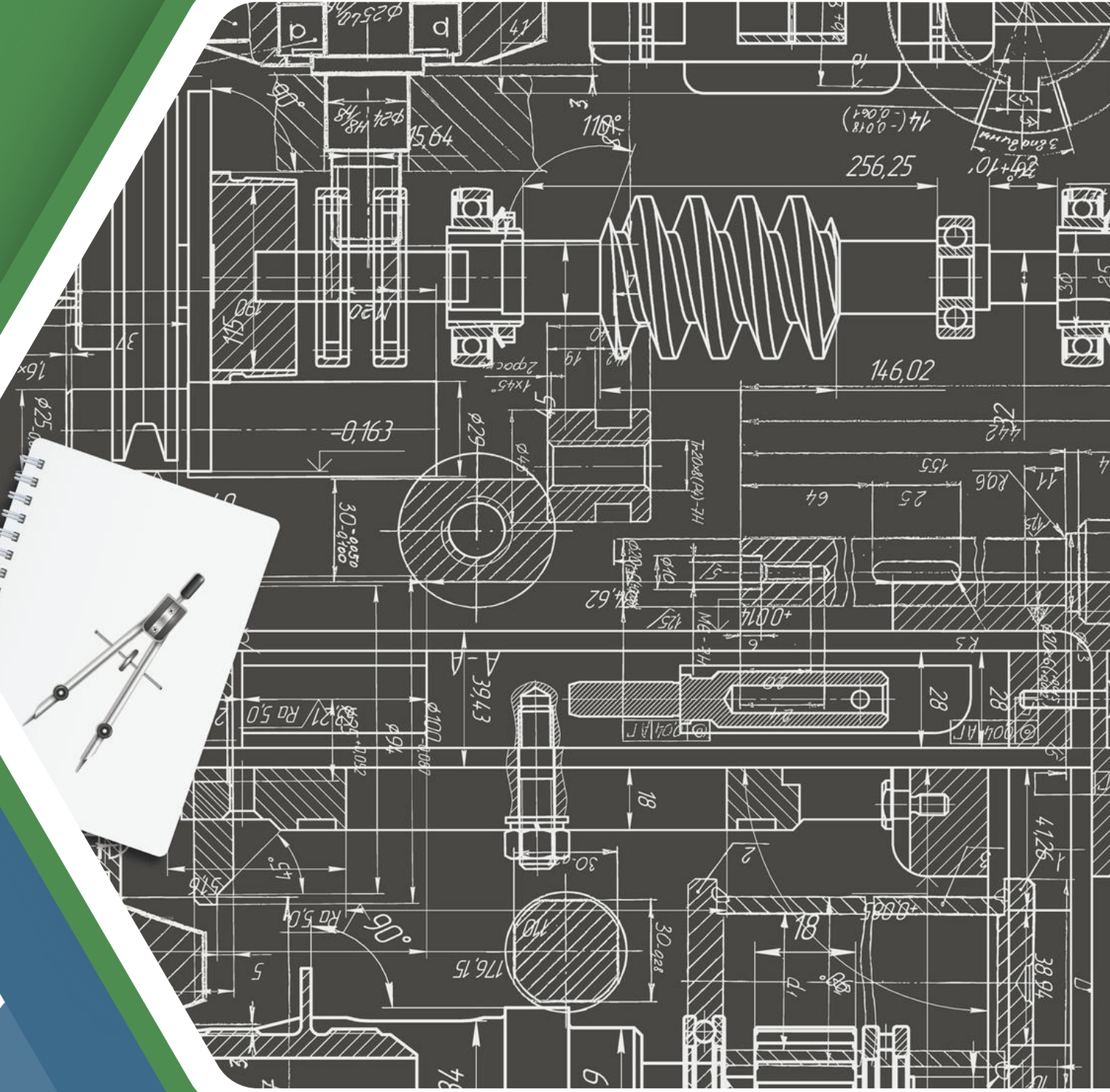
Evergreen Test Technologies



www.e2t.com.tr



info@e2t.com.tr





Evergreen Test Technologies

Contents

▶	About Us	01
▶	Our Services	02
▶	Testing Solutions	03
▶	E2T Control Suite	04

▶	Pressure Scanners	05
▶	Temperature Scanners	06
▶	Contact	07



About Us

Evergreen Test Technologies is an engineering and technology company specializing in developing custom test systems for clients operating in the aviation, aerospace, defense, oil-gas, and energy sectors. With 15 years of experience, our expert team understands the needs of our clients and delivers innovative and reliable solutions to the most challenging engineering problems.

Our mission is to empower our customers by providing cutting-edge, customer-centric solutions that enhance efficiency, safety, and performance. Our team of experienced engineers is committed to understanding the specific requirements of each project, ensuring that we deliver results that exceed expectations.

“Custom Solutions, Global Standards”



Our Specializations

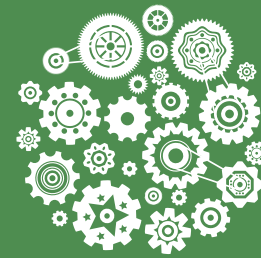
At **E2T**, we are committed to being a **One-Stop Solution Hub**, leveraging our expert team and strategic solution partners to deliver tailored solutions that precisely meet our customers' needs.



Aerodynamic
Design & Analysis



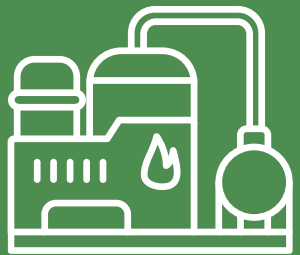
Aerothermal
Design & Analysis



Mechanical
Design & Analysis



Dataacquisition
Control & Automation



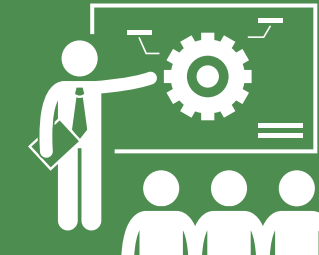
Testing Facility
Installation



Modernization



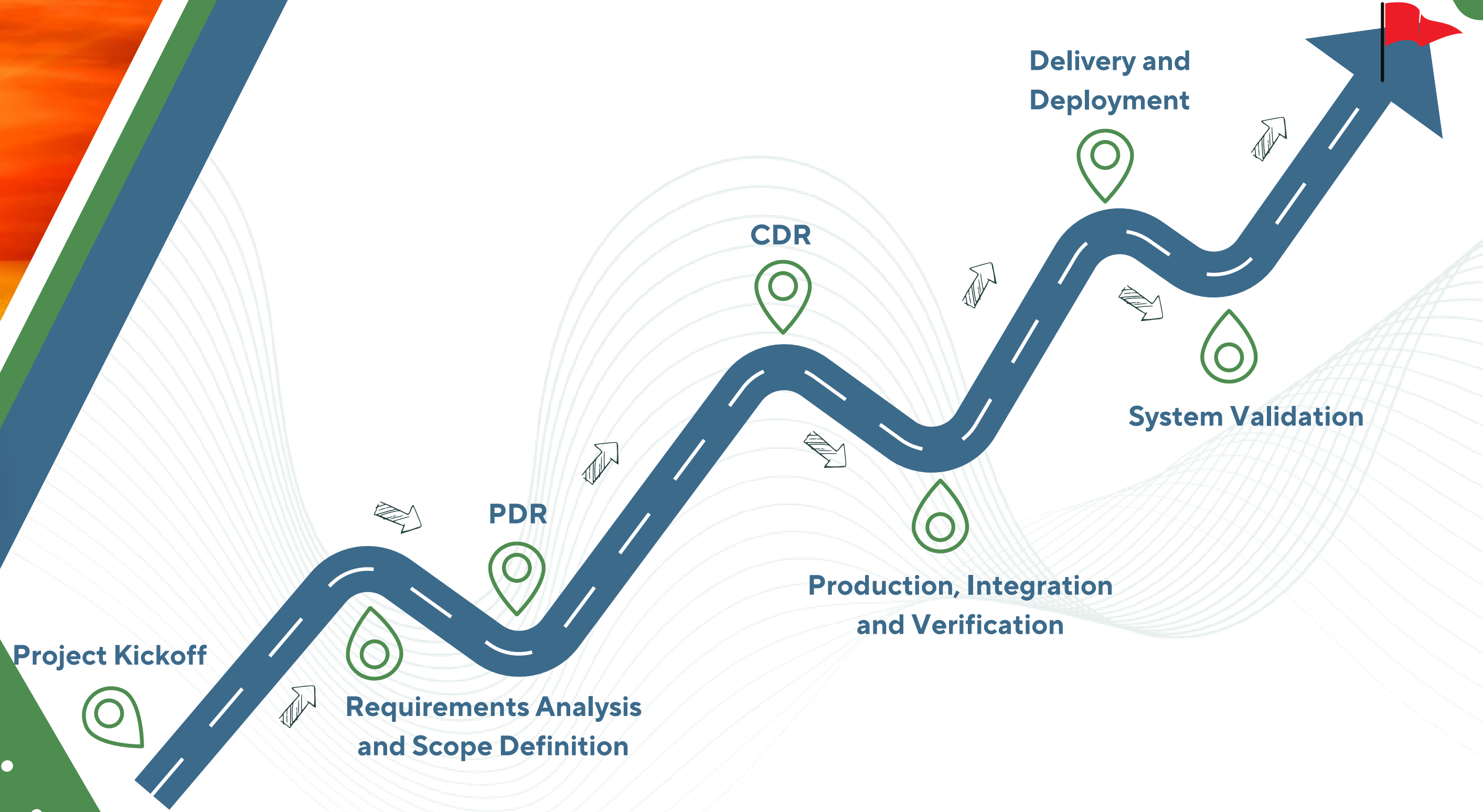
Test Operation
Processes



Training &
Documentation



Development Roadmap



Our Services

Evergreen Test Technologies provides comprehensive services to its customers in the aviation, aerospace, land, oil-gas, and energy sectors, specializing in the development of custom test systems and the integration of these systems.

Within the scope of the services we provide, our expert team ensures full integration by maintaining the highest level of communication with our customer's relevant teams.



TÜBİTAK
SAGE



roketsan

Kale Jet Motorları



SAVENER



www.e2t.com.tr



info@e2t.com.tr

E2T Danışmanlık A. Ş. | GOSB Teknopark Hightech Binası, Gebze Osb Mah. Kemal Nehrozoğlu Cad. No: 507/8 Gebze/KOCAELİ

Service Topics

We offer solutions to our customers in line with industry developments, innovative technologies, and full compliance with international standards, thereby enhancing our customers' competitive strength and contributing to their preparation for future technologies.



01

Engineering Design
Consulting

02

Test Operations
Consulting

03

Preparation of Technical
Specifications

04

Dataacquisition, Control and
Instrumentation

05

Modernization, Maintenance, and Repair



Testing Solutions

We offer testing solutions to our customers in line with industry developments, innovative technologies, and full compliance with international standards, thereby enhancing our customers' competitive strength and contributing to their preparation for future technologies.



With our 15 years of experience in the industry, we provide our customers with the highest quality of service.



By understanding our customers requirements, we develop tailored solutions for them.



By closely following technological advancements, we deliver solutions to our customers using the latest technologies.



In our Development and Testing processes, we adhere to national and international standards.

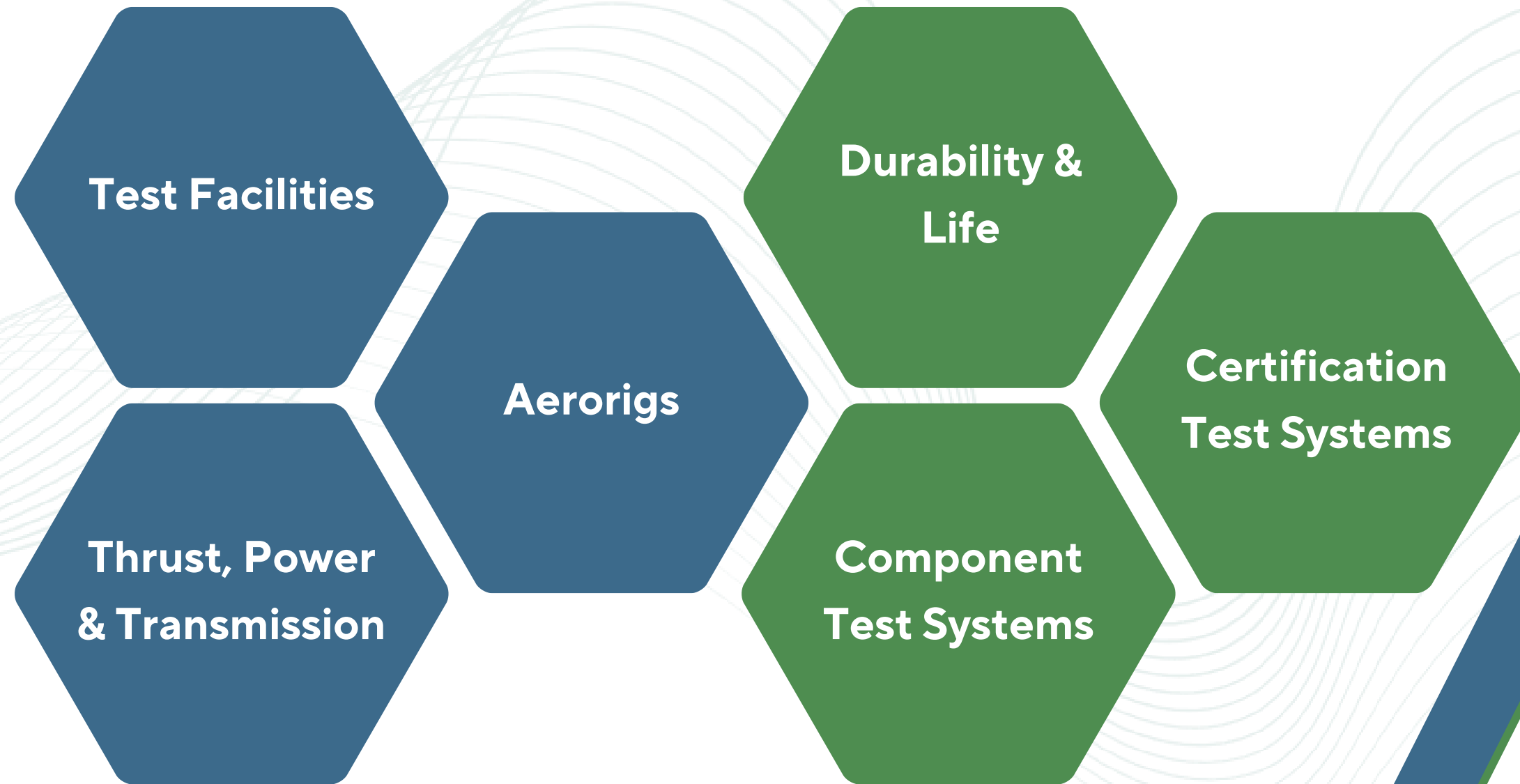


We focus on solutions that minimize initial investment and operational costs in the systems we develop.



Thanks to our modular system architectures, we contribute to the sustainability of your testing infrastructure..

Aviation Test Systems



Aviation Test Systems



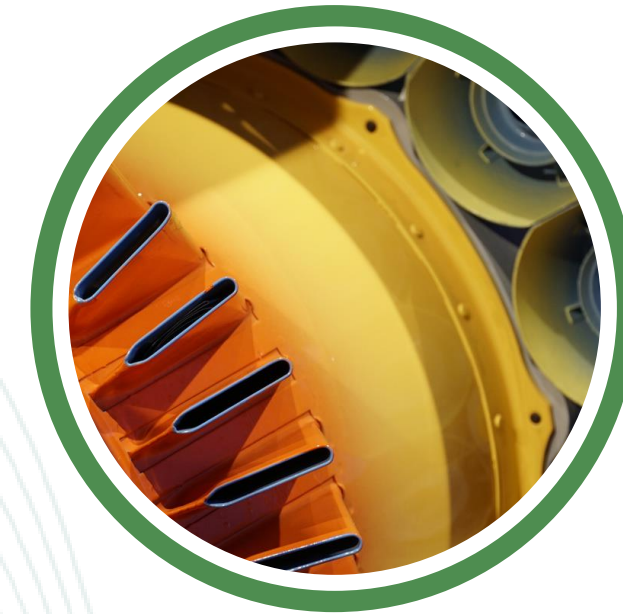
Testing Facilities

- Altitude Test Facility
- Wind Tunnel
- Icing Wind Tunnel



Power & Transmission

- Thrust Measurement Stand
- Power Measurement Stand
- Gearbox Test Stand



Aero Rigs

- Fan Test Rigs
- Compressor Test Rigs
- Combustion Chamber Test Rigs
- Turbine Test Rigs

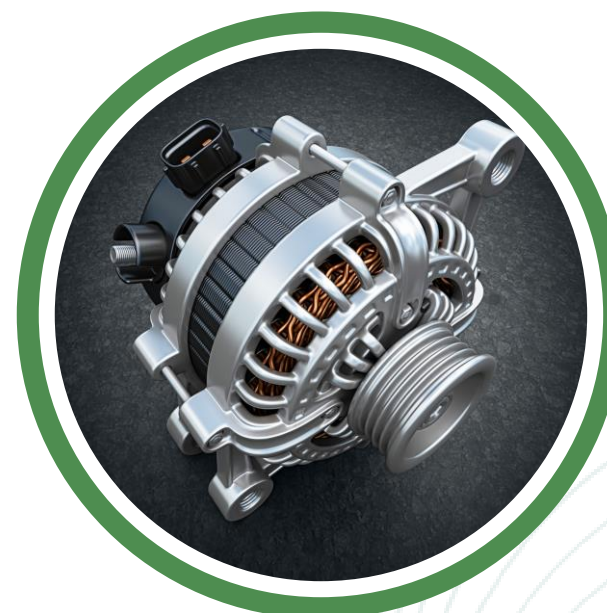


Aviation Test Systems



Durability & Life

- Structural Test System
- Landing Gear Test System



Component

- Alternator Test System
- Bearing Test System
- Pump Test System
- Manifold Test System
- Orifice Test System
- Coating Performance Test System



Certification

- Water Ingestion Test System
- Sand Ingestion Test System
- Damage Tolerance Test Systems



Spacecraft Test Systems

**Cold Flow
Test System**

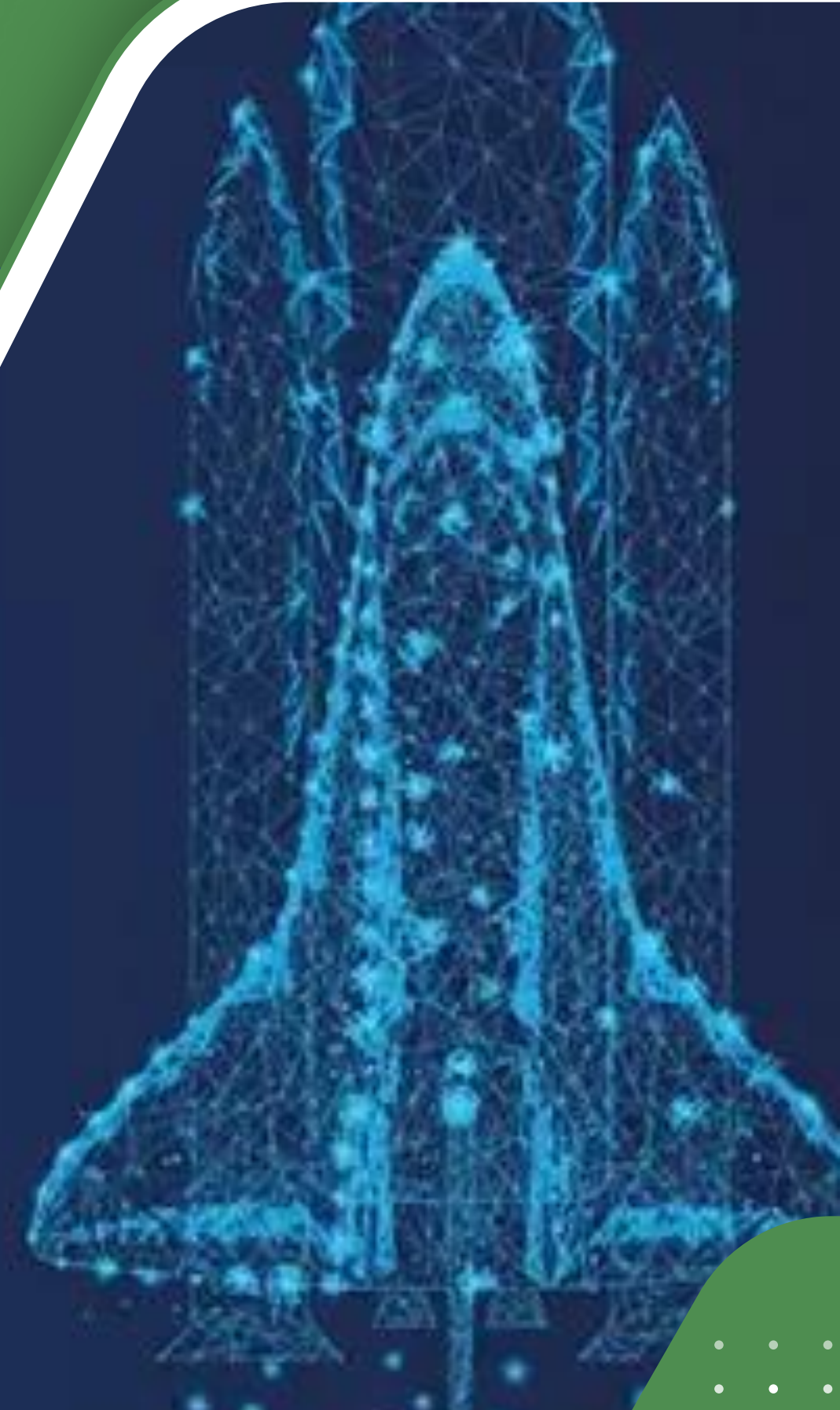
**Combustion
Chamber
Test Rig**

**Static Fire
Test System**

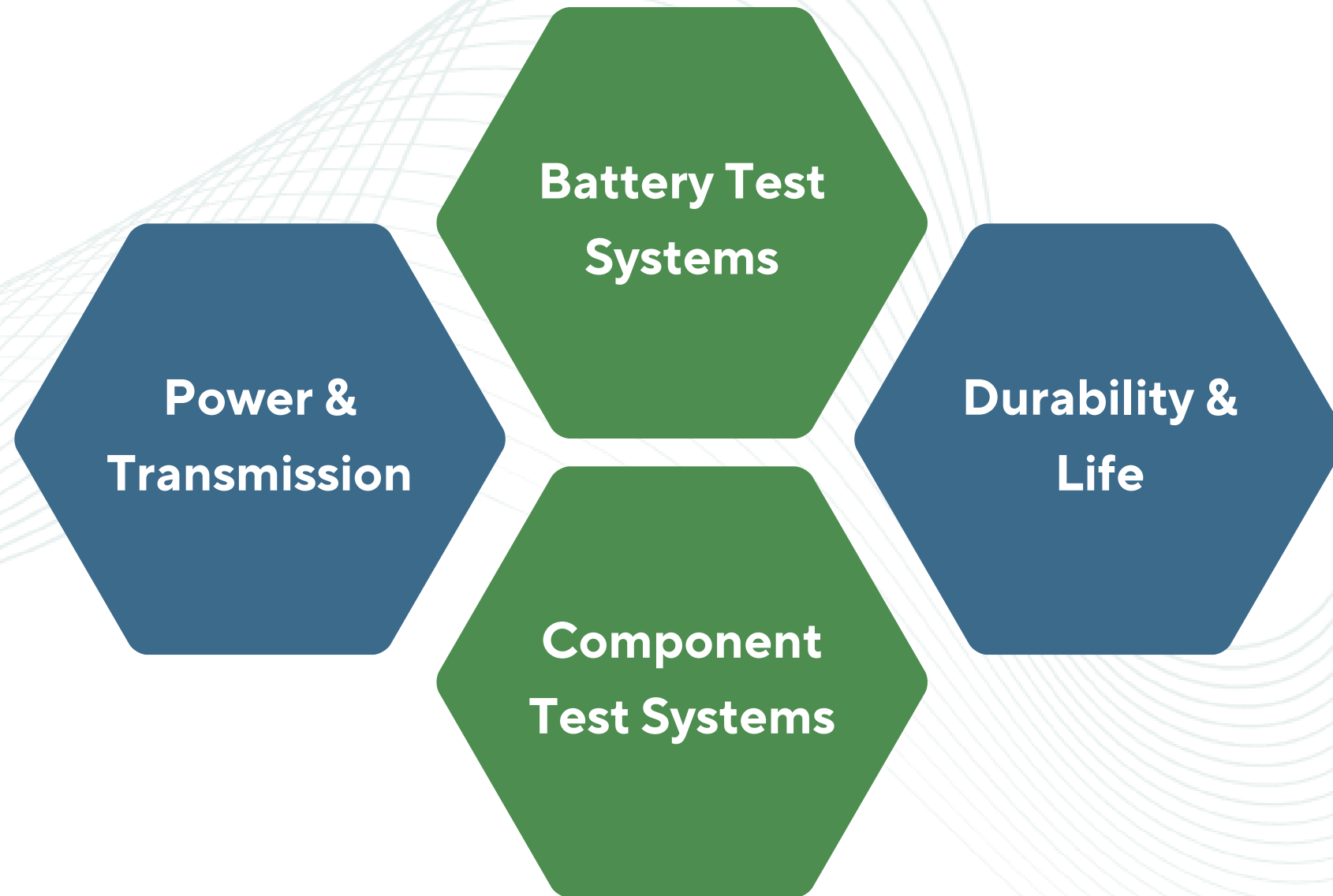
**Bearing
Test System**

**Thermal Shock
Test System**

**Leakage
Test System**



Land Vehicles Test Systems

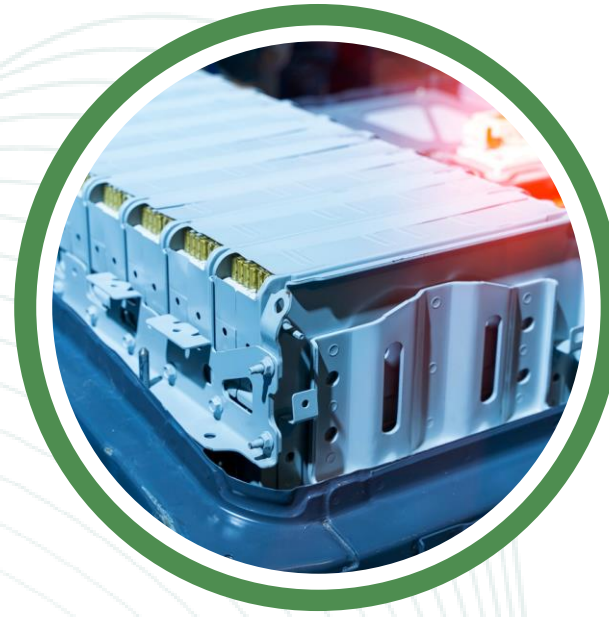


Land Vehicles Test Systems



Power & Transmission

- Combustion Engine Test System
- Electrical Engine Test System
- Transmission Test System



Battery

- Electrical Test System
- Life-Cycle Test System
- Crush & Impact Test System
- Environmental Test System



Durability & Life

- Fatigue Test Systems
- Road Simulation Test System
- Wear & Tear Test System



Component

- Alternator Test System
- Bearing Test System
- Pump Test System
- Braking Test System
- Suspension Test System
- Steering Test System
- Wheel & Tire Test System
- Radiator & Intercooler Test System



Oil & Gas Test Systems

**Fluid
Conditioners**

**Valve
Test Systems**

**Leakage
Test System**

**Storage Tank
Test System**



Energy Plant Test Systems

**Electrical
Test System**

**Condition
Monitoring
System**



E2T Control Suite

E2T Control Suite is a hardware-independent control software developed to enable you to manage your test operations from a single point. Thanks to its flexible and modular architecture, it allows you to control your test systems both manually and automatically. With E2T Control Suite, you can monitor your data in real-time and record it.



Advantages of E2T Control Suite

- **Centralized Control:**

Ability to manage all test operations from a single point.

- **Compatibility:**

Fully compatible with your existing test systems.

- **Efficiency:**

Saves time and costs with automated test scenarios.

- **Reliability:**

Ensures high accuracy in data collection and control processes.

- **Scalability:**

Allows you to expand your system by adding new equipment and test scenarios.

Key Features of E2T Control Suite

Hardware-Independent Structure

- Multiple communication protocol support (Modbus, CAN, Ethernet/IP, ARINC),
- Full compatibility with hardware from different brands and models.

Real-Time Data Monitoring and Recording

- Customizable indicators,
- Multiple recording file options,
- Database support.



Flexible and Modular Architecture

- Custom modules tailored to your test operations,
- User-friendly interface,
- Dynamic GUI,
- Advanced Error Handling.

Manual and Automatic Control

- Predefined test scenarios,
- Support for multiple PID and MFA controllers,
- Advanced warning and alarm modules.



Pressure Scanners



High Performance Industrial Pressure Scanner

- 16 and channel rugged industrial pressure scanner.
- Up to 0.04% FS accuracy output.
- Integrated SQDC quick disconnect interface.
- Thermally compensated from -40 to 100oC.
- Integrated software controlled heater.
- Output over Ethernet (100Mbit TCP/IP) and CAN.
- Sealed to IP67.



16 Channel Advanced Pressure Scanner

- Unparalleled Data Quality: up to 0.02% of full scale
- 24 bit synchronous acquisition across all channels
- Multi-range and in field transducer replacement
- 1kHz per channel
- Absolute and differential measurements
- 2 x 24 bit ADC per channel (pressure and temperature)
- Output over Ethernet (100Mbit TCP/IP)



32 Channel Pressure Scanner

- Unparalleled Data Quality: up to 0.02% of full scale
- 24 bit ADC per channel
- 200Hz per channel
- Absolute and differential measurements
- Electrically driven valve for purge and re-zero
- Output over Ethernet (100Mbit TCP/IP)



Temperature Scanners

flightDAQ-TL – Voltage, Resistance and Temperature Acquisition System

- Configurable acquisition system for PRT's, thermocouples and external pressure transducers (amplified or ratiometric).
- 16 highly configurable inputs measuring resistance and voltage over a number of programmable ranges.
- With open-circuit-detect per channel
- 24 bit resolution
- Configurable 5, 10 and 24V excitation.
- 250Hz per channel measurement frequency.

Chell Smart Connector

Three distinct types or of Smart Connector are available; for pressure transducers (or voltage signals), thermocouples and RTD's.

The Smart Connectors have been comprehensively tested for vibration, altitude and temperature to deal with harsh environments.

All connector types can be programmed with useful features such as calibration date, transducer information and serial number in 256 bytes of user defined memory.



CONTACT US

Phone

+90 541 226 2323

Email

info@e2t.com.tr

Website

www.e2t.com.tr

Location

E2T DANIŞMANLIK A. Ş.
GOSB Technopark Hightech Building,
Kemal Nehrozoğlu Street, No: 507/8,
Gebze/KOCAELİ, TURKIYE

